

UNITED NATIONS United Nations Mission in Sudan	 UNMIS	NATIONS UNIES Mission des Nations Unies au Soudan

Lakes State Briefing Pack

Prepared by Lakes State Integrated Office

Rumbek, 17 June 2010

Table of Contents

I. Security-political history and current situation	p. 1
a. Historical background	p. 1
b. Security	p. 1
c. Political	p. 2
II. Synopsis of State Government and organigram	p. 2
III. Recovery and development situation and needs	p. 4
IV. The state integrated team: composition and activities	p. 5
V. UN agencies and operating partners/per sector	p. 9
VI. Map of Lakes State	p. 10

I. Security-political history and current situation

a. Historical background

Lakes State is situated in the heart of Southern Sudan with a population of 695,730 according to the 2008 population census. Lakes State is inhabited mainly by Dinka ethnic section. However, the Jur-bel ethnic group (which is a non-Dinka tribe) inhabit Wullu County, which shares a boundary with Mvolo County of Western Equatoria.

Lakes State Counties

- | | |
|-------------------|---------------|
| 1. Rumbek Central | 5. Yirol West |
| 2. Rumbek North | 6. Yirol East |
| 3. Rumbek East | 7. Awerial |
| 4. Cueibet | 8. Wulu |

Rumbek Central, Rumbek North and Rumbek East counties are purely inhabited by the Dinka section. Agar, Cueibet is inhabited by Dinka Gok, Yirol West is inhabited by Dinka Atuot, Yirol East is inhabited by Dinka Ciec and Awerial is inhabited by only Dinka Aliab, bordering Munduri to the west in Central Equatoria State and Dinka Bor to the north of the River Nile in Jonglei State.

Most of the Dinka sections in Lakes are semi agro-pastoralist, but they are heavily investing in cattle-rearing. The Jur-bel of Wulu County are solely dependent on agriculture, with a small number of cattle being kept by individuals. The Jur-bel and the neighbouring Dinka live in coexistence and inter-marry.

b. Security

The security situation in Lakes State is generally calm. However, we had a series of sectional clashes from February to May 2010. These conflicts were primarily between the Nuer of Unity State and Dinka Ciec of Yirol West, and between the Dinka Luangjang of Warrap State and the Dinka Agar of Rumbek North in Lakes. The Dinka Gok of Cueibet County have also been involved in the conflicts. There were also clashes between SPLA soldiers and civilians in Cueibet [Abieicok and in Cueibet town] and Rumbek East [Akot]. On the whole, Lakes State experienced over 17 severe inter-sectional conflicts in four consecutive months from January through May 2010. The result of these conflicts created massive civilian displacement and resulted in the loss of innocent lives.

c. Political

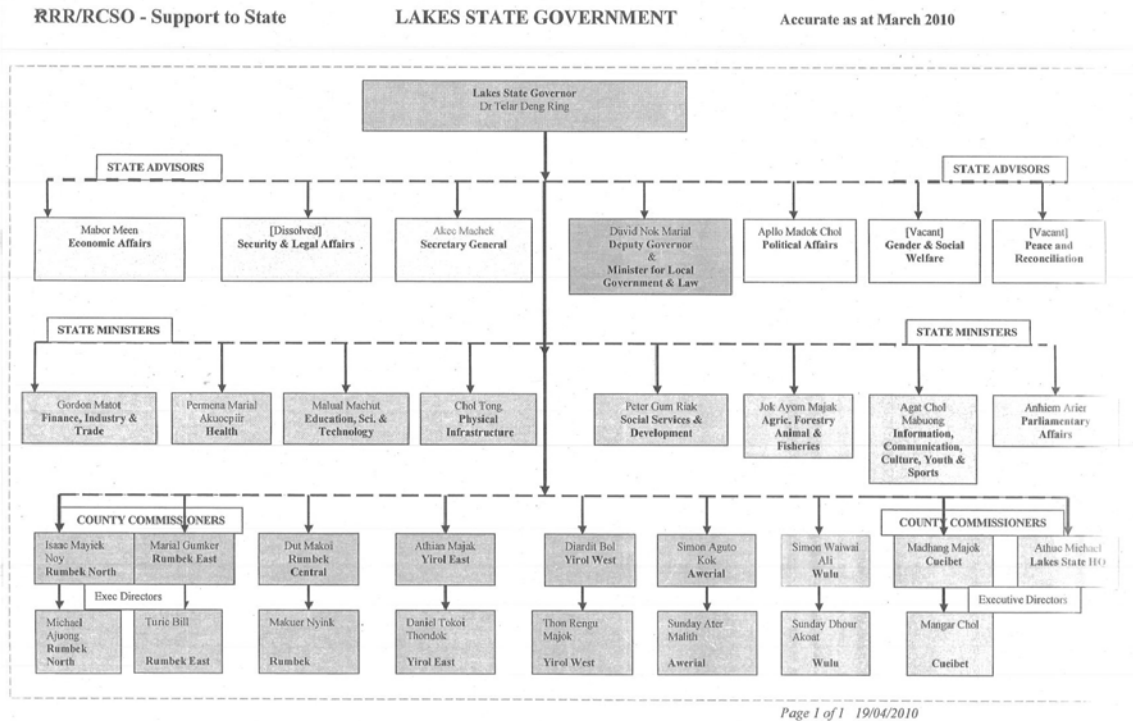
Elections in Lakes States proceeded freely and fairly without any complications. The Governor, H.E Chol Tong, is forming his cabinet and it will be announced soon.

II. Synopsis of State Government and organigram

a. Synopsis of State Government

- 2005-2007: H.E. John Laat was the first Governor of Lakes State appointed after signing of the CPA (he was from Cueibet County)
- 2007-2010: H.E. Daniel Awet Akot was the second Governor (also from Cueibet County)
- April to May 2010: H.E. Judge Telar Deng was the caretaker Governor (originating from Yirol West County)

b. Organigram



III. Recovery and development situation and needs in the state.

Recovery and development activities have been rather good in Lakes State, but following the phasing out and departure of most of the key NGOs/UN agencies, there has been decreased activity. However, Oxfam GB and Save the Children South Sudan are implementing recovery and development programmes funded by ECHO and SRF-SS in five counties. WFP supports 40,000 school children with a school feeding programme. BRAC is training ex-combatants in agricultural skills, and there is also an SRF stabilization programme for the state.

The Government is also doing its best in the area of reconstruction, and construction of a road network connecting the counties is ongoing. It has not been easy to access two of the state's counties: Awerial and Rumbek North.

IV. The state integrated team: composition and activities

a. Team Members

- Team Leader and State Stabilization: Saeed Hussein
- Protection of Civilians: Desire Nkuba
- Humanitarian Action: Mark Omina
- State Support Issues: Morgan Kuyu

b. Activities

Protection of Civilians

The protection of civilians focal point serves as the coordinator for protection activities in the state. Alongside human rights, security UNDSS, UNPOL and UNMOS, the IO through its protection mandate, participates in field assessment/verification missions and patrols to collect and analyze data, and to provide a clear understanding of protection-related issues. Daily activities include participating in all relevant protection discussions and other sector-related meetings to promote the protection of civilians.

Challenges

- Forceful disarmament of civilians by SPLA leading to disputes in Akot, Cuiebet, Rumbek North
- Cattle-raiding
- Banditry on a daily basis with attacks on commercial and operating partners' vehicles along Rumbek Central-Yirol road, Rumbek Central-Wulu road and Rumbek Central-Cueibet road
- Lack of enough capacity (means of transport, training and equipments) for local police
- The culture of impunity and weak judiciary system

Humanitarian Action

The humanitarian situation in Lakes State is moderately stable, following last year's failures of rain, the production of crops was severely poor leading to the current WFP general emergency food distribution to the most vulnerable residents that commenced from February to July 2010.

- WFP supports over 188,000 vulnerable people monthly by providing food assistance
- 700 in-patients under TB and leprosy treatment are supported by WFP with food while hospitalized

WFP is targeting the following beneficiaries in May and June:

- During May 2010, WFP Rumbek delivered a total of 2,039 metric tonnes of assorted food items to benefit 216,621 persons through GFD, FFE, FFT, FFR and DDR respectively.

- WFP and the Ministry of Education assessed 70 school facilities in Cueibet, Wulu, Awerial, Rumbek Central, Yirol West, Yirol East and Rumbek East counties and provided FFE rations to 24,000 pupils in 44.
- An inter-agency team comprised of UNMIS/HA, UNWFP, SRRC and OXFAM verified and registered 4,756 IDPs in Yirol East County. A total of 77.00 metric tonnes of food was provided during the first week of June 2010.

Summary of food in metric tonnes distributed by modality

Modality	Tonnage			Beneficiaries		
	Plan	Actual	Plan/Actual %	Plan	Actual	Plan/Actual %
GFD	1,696	1,502	89%	187,929	182,909	97%
DDR	0	340.20	0%	0	7000	0%
FFE	132.00	166.38	126%	40,000	24,718	62%
FFR	0	20.91	0%	0	1760	0%
IFP	0	4.44	0%	0	90	05
FFT	4.67	4.71	101%	144	144	100%
Total	1832	2039	111%	228,073	216,621	95%

- WFP planned to deliver 2,896 metric tonnes of food to 243,701 beneficiaries through GFD, FFE, FFR, IFP and DDR rations. As of 16 June 2010, a total of 1,525 metric tonnes of assorted food items were distributed to 105,174 persons (mainly food insecure households). This represents about 53% of planned food tonnages and 43% of planned targeted beneficiaries. Food distributions are ongoing and will be completed before the fourth week of June 2010.

Ongoing plans

- Continue with emergency intervention until the end of July 2010.
- Conduct assessments in areas with IDPs due to conflicts.
- Support ongoing recovery and development activities.
- Deliver FFE rations to 40,000 school pupils in 93 schools.

Challenges

- Insecurity affected delivery of assistances to some areas, as well as freedom of movement of humanitarian workers
- Food pipeline break in August 2010
- Continuing conflict and displacement of people
- Limited resources to support spontaneous returnees
- Poor conditions of road, especially during rainy season
- Insufficient resources to fulfill humanitarian needs
- Ethnic-political barriers to equitable allocation of available resources

FAO-ERCU Department (Emergency, Relief and Coordination Unit)

- Seeds and tools distribution to 8,000 households comprised of IDPs and returnees
 - Implementing partners are ACROSS (which operates in Greater Rumbek counties), African Christian Mission International (ACMI) (which operates in Cueibet and Wulu counties) and the State Ministry of Agriculture (which operates in Greater Yirol counties).
 - Types of seeds and tools provided are sorghum, ground nuts, beans, maize, cow peas and sesame; sickles, hoes and malodas
 - ACROSS received 43.12 metric tonnes of assorted seeds and 6,966 pieces of assorted tools; ACMI received 32.76 metric tonnes of assorted seeds and 5,292 pieces of assorted tools; and the Ministry received 28.14 metric tonnes of assorted seeds and 5,191 pieces of assorted tools.
- Delivery of seeds and tools from warehouse to the counties by implementing partners has been completed.
- Registration at the county level has also been completed.
- Funds have been disbursed to facilitate distribution, storage, loading/offloading, and monitoring and post-harvest assessment.

FAO-DDR department

- Original target for ex-combatants is 1,300. Letter of agreement signed for initial start with 273 ex-combatants opting for agriculture activities
- Verification is complete
- Training in different agricultural skills completed.
- Distribution of kits comprising:
 - maize, sorghum, ground nuts and vegetable kit
 - hoes/maloda, panga, sickle and ox plough
 - small ruminants, poultry, fishing gears (spools and hooks), fishing boats and bee hives

FAO-SPCRP department (Sudan Productive Capacity Recovery Programme)

- A government project linked to the Ministry of Agriculture
- Activities include rural advisory service and capacity-building component.

Rural Advisory Service (RAS)

- Letters of agreement developed with partners to establish 32 farmer field schools (FFS)
- Training of FFS facilitators and supervisors on:
 - Approaches and methodologies of FFS
 - Training in participatory rural appraisal (PRA)

Human capacity-building

- External training (abroad)
 - Three state ministry staff undergoing training in Kenya on sustainable agriculture, hides and skins technology and agro-forestry

- One staff member being trained on conservation agriculture in Lesotho
 - One staff in training on extension methods in Kenya
- Internal Training
 - Horticulture
 - Agronomy

Institutional capacity-building

- Developing job descriptions for Ministry of Agriculture staff at the state and county levels
- Training in computer skills
- Training in budgeting, finance, procurement and office systems
- Training in project cycle management (PCM)/monitoring and evaluation (M&E)

Physical capacity-building

- Office construction and equipping with furniture and computers
- Support through:
 - Provision of vehicles and motor-bikes to ease logistical problems
 - Provision of financial support as a running/operation budget
 - Installation of Codan radio to ease communication between the counties and state

VI. UN agencies and other organizations operating per sector

Name of Organization	Location	Operations area	Sector of operation	Contact Person	International
Carter Centre	Rumbek Centre	2 Counties	Health	Ali Raza	International
ACMI	Rumbek Centre	3 Counties	Food Security &		International
AMCIS (African Methodist Christian Mission Int'l)	Rumbek Centre	8 Conties	Peacekeeping Mission	Richard Macknnon	International
Malteser	Rumbek Centre	Matangai	Health	James Mwanza	International
UNMIS	Rumbek Centre	Matangai	Return & Reintegration	Desire Nkuba	International
WFP	Rumbek Centre	All Counties	Food Security &	Kafera Godfrey	International
UNMIS (World Food Program)	Rumbek Centre	Matangai	Common Services & Livelihood	Luka Mark Omina	National
UNICEF	Rumbek Centre	All Counties	Coordination	Stephen Mathiang Deng	National
UNMIS (United Nations Children Fund)	Rumbek Centre	Matangai	Return & Reintegration Shelter	Saced Hussein	International
UNDP	Rumbek Centre	All Counties	Capacity Building	Daniel Kir	National
CCM (Norwegian & Swedish Red Cross)	Awerial	Bun-agok	Health	Timothy MALINGI	International
WHO	Rumbek Centre	All Counties	Health		
NRC Consortium (Norwegian & Swedish United Nations Development Program)	Yirol West	3 Payams	Health	Olaf ROSSET	International
SSRC	Rumbek Centre	All Counties	Common Services & Health	Philip Kot Job	National
CISP (Int'l Committee for the Devt of Peoples)	Rumbek Centre	Jir	Coordination	Lucia Sorrentino	International
MSI (Akot Medical Mission Mustard Seed VSF International)	Rumbek East	Akot	Health	Jennifer MAXWELL	International
(Veterans Sans Frontiers)	Rumbek Centre	Awerial and Rumbek	Livestock	Timothy Kilimo	International
NPA (Norwegian People's Aid)	Yirol West	North Yirol	Food Security & Education, Livelihood	Kuir Dan Aten	International
BRAC	Rumbek Centre		Livelihood	Sadiq	International
BRWASSA (Rural Water & Sanitation Support Agents)	Rumbek Centre	All Counties	WASH	Kenyi Joseph	National
DRDA (Rehabilitation Development Association) Dar in Ndinka language	Rumbek Central	Rumbek East	Adult education and IGA		
SDRDA (Sudan Disable Rehabilitation and Development Association)	Rumbek Centre	3 Counties	Food Security & Livelihood	Qasim Janjua	International
IRC (Int'l Rescue Committee)	Rumbek Centre	3 Counties	Protection	Robert Koma	International
GTZ	Rumbek Centre	Rumbek Centre		Isreal Chauka	International
SP (Samaritan Purse)	Rumbek Centre	Matangai	Basic Infrastructure & Settlement Dev.		International
SCA (Save the Children Alliance)	Rumbek Centre	3 Counties	Education	Isaac Longiti	National
CEFA	Rumbek Centre	2 Counties	Food Security & Livelihood		International
WWI (Women for Women International)	Rumbek Centre	3 Counties	Food Security & Livelihood	Karak Mayik	International
ACROSS	Rumbek Centre	2 Counties	Education, Health, Agriculture	Andrew Marial	National

Lakes State Map

